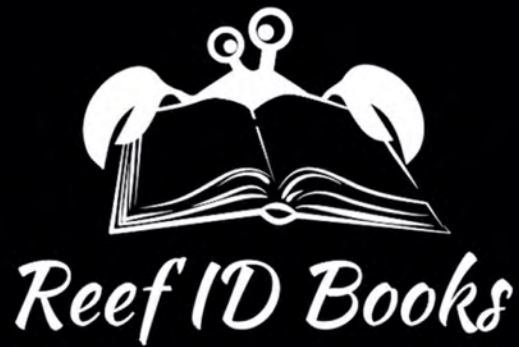


# Nudibranchs of the Coral Triangle

FREE  
PREVIEW



SELECTED  
PAGES



**Andrey Ryanskiy**  
**Yury Ivanov**

# **Nudibranchs of the Coral Triangle**

## **Reef ID Books**



Photographic guide with  
1080+ species covered

**Andrey Ryanskiy**  
**Yury Ivanov**



# PICTORIAL INDEX TO FAMILIES AND COMMON NAMES



**HEXABRANCHIDAE - 7**



**POLYCERIDAE  
NEMBROTHA - 8**



**POLYCERIDAE  
KALOPLOCAMUS - 11**



**POLYCERIDAE  
GYMNODORIS -16**



**GONIODORIDIDAE  
MURPHYDORIS - 21**



**GONIODORIDIDAE  
CERATODORIS - 21**



**GONIODORIDIDAE  
TRAPANIA - 23**



**AEGIRIDAE - 27**



**DORIDIDAE - 28**



**CADLINIDAE - 29**



**DISCODORIDIDAE  
ASTERONOTUS - 30**



**DISCODORIDIDAE  
ATAGEMA - 30**



**DISCODORIDIDAE  
CARMINODORIS - 31**



**DISCODORIDIDAE  
DISCODORIS - 32**



**DISCODORIDIDAE  
HALGERDA - 33**



**DISCODORIDIDAE  
JORUNNA - 34**



**DISCODORIDIDAE  
PLATYDORIS - 37**



**DISCODORIDIDAE  
ROSTANGA - 38**



**DISCODORIDIDAE  
THORDISA - 40**



**ACTINOCYCLIDAE - 42**



**CHROMODORIDIDAE  
ARDEADORIS - 43**



**CHROMODORIDIDAE  
CHROMODORIS - 45**



**CHROMODORIDIDAE  
HYPSELODORIS - 52**



**DENDRODORIDIDAE - 62**



**PHYLLIDIIDAE - 64**



**MADRELLIDAE - 68**



**DORIDOMORPHIDAE - 68**



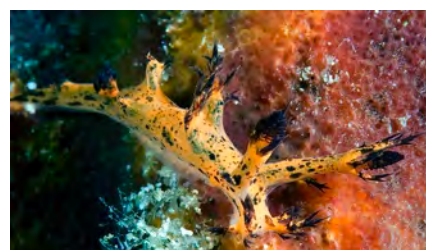
**ARMINIDAE - 69**



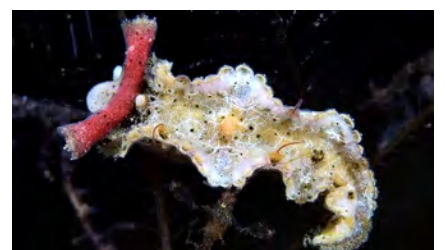
**PROCTONOTIDAE - 72**



**BORNELLIDAE - 73**



**DENDRONOTIDAE - 74**



**LOMANOTIDAE - 74**



# PICTORIAL INDEX TO FAMILIES AND COMMON NAMES



**SCYLLAEIDAE - 76**



**THETIDIDAE - 76**



**DOTIDAE - 78**



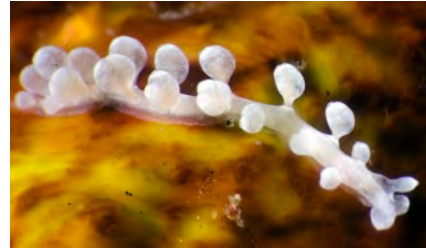
**TRITONIIDAE - 82**



**FLABELLINIDAE - 85**



**SAMLIDAE - 86**



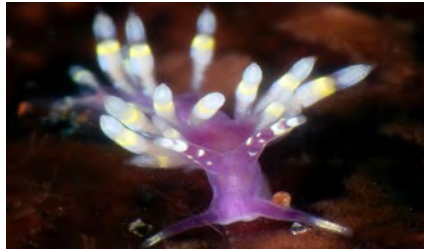
**EMBLETONIIDAE - 86**



**EUBRANCHIDAE - 87**



**FIONIDAE - 90**



**ABRONICIDAE - 90**



**TRINCHESIIDAE - 91**



**UNIDENTIDAE - 100**



**BABAKINIDAE - 100**



**PLEUROLIDIIDAE - 100**



**FACELINIDAE  
CALORIA - 101**



**FACELINIDAE  
FACELINA - 101**



**FACELINIDAE  
FAVORINUS - 102**



**FACELINIDAE  
NOUMEAELLA - 107**



**FACELINIDAE  
MYJA - 108**



**MYRRHINIDAE - 109**



**AEOLIDIIDAE  
BAEOLIDIA - 115**



**AEOLIDIIDAE  
CERBERILLA - 116**



**ACTEONIDAE - 118**



**BULLINIDAE - 118**



**APLUSTRIDAE - 118**



**DIAPHANIDAE - 119**



**BULLIDAE - 119**



**MNESTIIDAE - 119**



**RUNCINIDAE - 119**



**HAMINOEIDAE  
ATYS - 119**



**HAMINOEIDAE  
HAMINOEID - 121**



**AGLAJIDAE  
CHELIDONURA - 122**



# PICTORIAL INDEX TO FAMILIES AND COMMON NAMES



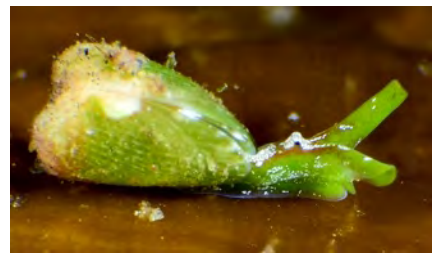
AGLAJIDAE  
PHILINOPSIS - 124



GASTROPTERIDAE - 126



PTEROPODA - 128



JULIIDAE - 129



VOLVATELLIDAE - 129



OXYNOIDAE - 129



CALIPHYLLIDAE  
CYERCE - 130



CALIPHYLLIDAE  
POLYBRANCHIA - 131



LIMAPONTIIDAE - 132



HERMAEIDAE - 139



PLAKOBRANCHIDAE  
ELYSIA - 139



PLAKOBRANCHIDAE  
THURIDILLA - 142



APLYSIIDAE - 144



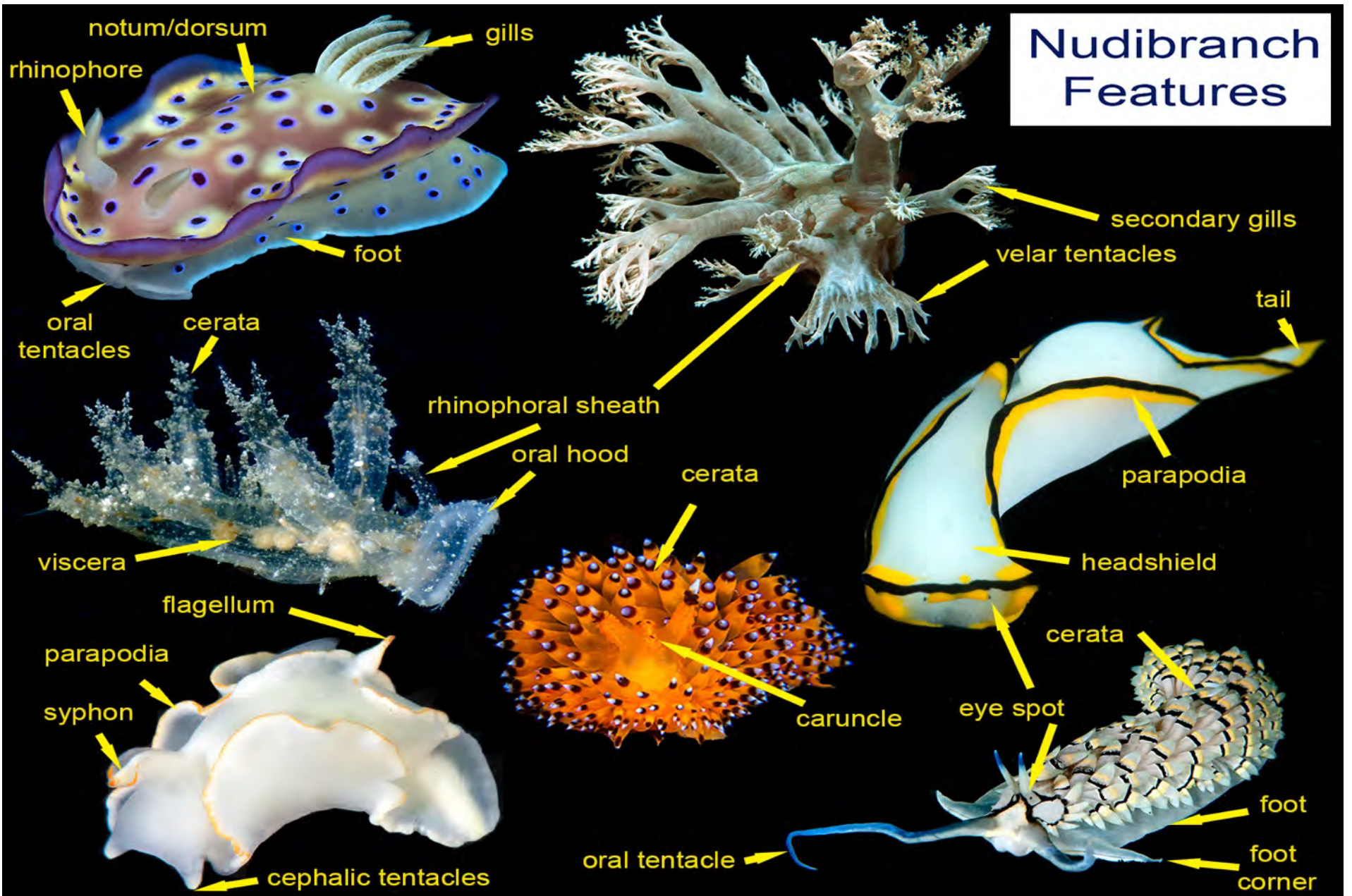
UMBRACULIDAE - 147



TYLODINIDAE - 147



PLEUROBRANCHIDAE - 147





## HEXABRANCHIDAE



**Giant Spanish Dancer** *Hexabranchnus giganteus* WIO, WP: Mozambique to Philippines, Indonesia, Vanuatu, reported up to 700 mm length. Five to eight separate gills. Yellow marginal band. Photos: Philippines, Indonesia



**Spanish Lace Dancer** *Hexabranchnus lacer* IP: from the WIO to CP and French Polynesia, 600 mm. Highly variable, mottled pattern, with wavy red and white marginal lines. Notum red with fine white flecks, often aggregating in “clouds” or “rosettes”. Capable of swimming by body flexions and mantle undulations.

6-8 separate gill branches that can not retract into a gill pouch. Common, nocturnal, found on coral reefs 2-20 m deep. Feeds on red sponges.

**a** juvenile, **b** early transitional, **c** transitional, **d** late transitional, **e** mature dark red, **f-h** mature (all photos - Philippines, Papua New Guinea, Indonesia)





**Pacific Thecacera** *Thecacera pacifica* IP, 50 mm. ID: orange with black and pearl-blue tips on appendages. Right photo - mating.



**Painted Thecacera** *Thecacera picta* IWP, 20 mm. ID: white with black lines and orange tips on appendages. Photo on the left - darker form from Bali.



**Dotted Thecacera** *Thecacera* sp. Indonesia, 7 mm. ID: translucent with tiny brown spots.



**Black-Horn Thecacera** *Thecacera* sp. WP, 40 mm. ID: rhinophores and appendages with black tips.



**Yellow-Tip Pikachu** *Thecacera* sp. WP, 40 mm. ID: semi-translucent white to orange, large dark spots, rhinophores and appendages with yellow tips.



**Yellow-Spotted Thecacera** *Thecacera* sp. Indonesia, 10 mm. Translucent with black and yellow spots.



**Black-Orange Thecacera** *Thecacera* sp. WP, 40 mm. Dark grey, rhinophores, appendages with orange tips.





**Black-Tipped Thecacera** *Thecacera* sp. WP, 20 mm.  
ID: orange with black-tipped appendages.



**Purple Picachu** *Thecacera* sp. Philippines, 40 mm.  
ID: purplish with round orange spots.



**Yellow-Spotted Thecacera** *Thecacera* sp. Philippines, Taiwan, 8 mm. Translucent with yellow spots.



**Leopard Thecacera** *Thecacera* sp. Indonesia, 20 mm.  
White-tipped appendages, surrounded by blue areas.



**White-Tipped Thecacera** *Thecacera* sp. Indonesia, 10 mm. ID: appendages with white tips.



**Black Thecacera** *Thecacera* sp. Indonesia, 15 mm.  
ID: totally dark grey.



**Jujube Thecacera** *Thecacera* sp. WP, 10 mm.  
ID: rhinophores with two orange bands.



**Orange-Lined Thecacera** *Thecacera* sp. WP, 20 mm.  
Translucent white w/orange lines. **Photo:** Jones Wayne



**Dark-Spotted Thecacera** *Thecacera* sp. Indonesia, 20 mm. ID: generally grey with oblong dark spots, rhinophores and appendages with yellow tips. Feeds on bryozoans (left photo).







**Strawberry Gymnodoris** *Gymnodoris aurita* IWP, 100 mm. Like other *Gymnodoris* species, feeds on opisthobranchs. **ID:** red with large yellow pustule. Left photo: feeding on *Marionopsis arborescens*.



**Translucent Gymnodoris** *Gymnodoris* sp. Philippines, 15 mm. **ID:** translucent, white rhinophores and brownish intestines. Gills are forming nearly complete circle.



**Ceylon Gymnodoris** *Gymnodoris ceylonica* IP, 120 mm. **ID:** white with red spots, gill branches with red marginal lines. Photo on the right: mating.



**Ceylon Gymnodoris** *Gymnodoris ceylonica* with prey - sea hare *Stylocheilus striatus*.



**Yellow-Guts Gymnodoris** *Gymnodoris* aff. *citrina* WP 30 mm. Close to *G. citrina* (below), visible intestines.



**Lemon Gymnodoris** *Gymnodoris citrina* IWP, 30 mm. **ID:** white or yellowish, gill circle complete, anterior head with a dentate appearance.







**Sweet Ceratodoris** *Ceratodoris kendi* WP, 25 mm. Philippines, Indonesia. ID: white with purple-brown pigment. Photo on the left: pinkish form, probably a separate species.



**Nakamoto Ceratodoris** *Ceratodoris nakamotoensis* IP, 20 mm. ID: 5 pairs of dorsal appendages.



**Stellar Ceratodoris** *Ceratodoris stellata* PNG, Australia, 15 mm. ID: white notum with thin red lines.



**Hairy Ceratodoris** *Ceratodoris pilosa* WP, 10 mm. White with tiny black dots ©Shaunak Modi



**Flat Ceratodoris** *Ceratodoris plana* WP, 10 mm. ID: translucent with numerous dark-brown spots.



**Yellow-Margin Goniodorid** *Goniodoridella geminae* WP, 9 mm. Gill branches and papillae are of equal size



**Savignyi Goniodorid** *Goniodoridella savignyi* IWP, 10 mm. Papillae much larger than gill branches



**White Goniodorid** *Goniodoridella unidonta* WP, 8 mm. Extrabranchial papillae very broad at the base.



**Brown Murphydoris** *Murphydoris adusta* IP, 7 mm. ID: white with brown white-dotted areas.





**Avern's Ardeadoris** *Ardeadoris averni* WP, 55 mm. **ID:** bluish white with yellow to orange broad marginal band, rhinophores and gills brown.



**White Ardeadoris** *Ardeadoris egretta* WP, 100 mm. **ID:** white with yellow to orange broad marginal band, rhinophores and gills white.



**White-Spotted Ardeadoris** *Ardeadoris undaurum* IWP, 66 mm. **ID:** yellowish marginal band, white blotches.



**Red Spot Ardeadoris** *Ardeadoris cruenta* WP, 55 mm. **ID:** yellow marginal band, red spots.



**Yellowish Ardeadoris** *Ardeadoris angustolutea* IWP, 25 mm. Narrow pale yellow line near mantle margin.



**Ornamental Cadinella** *Cadinella ornatissima* IP, 35 mm. **ID:** yellow, large tubercles with pink tips.



**Many-Lobed Ceratosoma** *Ceratosoma tenue* IP, 120 mm. **ID:** coloration variable, mantle with interrupted blue marginal line.







**Red-Tipped Nudibranch** *Goniobranchus* sp. WP, 15 mm. ID: red-tipped gills, midline purple-spotted.



**Hilly Nudibranch** *Goniobranchus* sp. PNG, 15 mm. ID: grey, mantle elevations mimicking sponge, grey gills.



**Dalmatian Nudibranch** *Goniobranchus* sp. Indonesia, 40 mm. ID: mantle and gills white with purple spots. Similar to *Chromodoris aspersa* but lacks orange marginal line.



**Purple-Blotched Nudibranch** *Goniobranchus tumuliferus* WP, 18 mm. Marginal band white or purple.



**Dolfu's Hypselodoris** *Hypselodoris dollfusi* IO to Bali, 50 mm. Marginal band yellow. **Photo:** Anouk Houben



**Red-Spotted Hypselodoris** *Hypselodoris iba* Indonesia, Philippines, 40 mm. Coloration variable. Anterior mantle margin often with bright orange and red bands. Rhinophores and gills orange to red.





**Melanesian Hypselodoris** *Hypselodoris melanesica* WP, 25 mm. ID: gills and rhinophores purple basally.



**Robe Hem Hypselodoris** *Hypselodoris apolegma* WP, 100 mm. ID: purple with reticulate white margin.



**Variegated-Gill Hypselodoris** *Hypselodoris variobranchia* Philippines, Malaysia, 50 mm. ID: gills orange or blue, orange rhinophores, wide marginal band.



**Baba's Hypselodoris** *Hypselodoris babai* WP, 50 mm. ID: red-brown with rounded white spots.



**Red-Midline Hypselodoris** *Hypselodoris peri* WP, 35 mm. ID: red median line, yellow marginal band.



**Bullock's Hypselodoris** *Hypselodoris bullocki* WCP, 45 mm. ID: coloration variable, mantle from white to purple, thin white marginal line.



**Broad-Margin Hypselodoris** *Hypselodoris* sp. Indonesia 50 mm. ID: gills, rhinophores orange, wide marginal band.



**Fish-Net Hypselodoris** *Hypselodoris jacula* IWP, 50 mm. Blue or pink w/white lines and orange margin.





**Yellow-Teeth Armina** *Armina cf. compta* WP, 120 mm. ID: oral veil with orange margin and yellow tubercles.



**Black-Face Armina** *Armina* sp. Indonesia, 200 mm. ID: orange-tipped rhinophores, oral veil w/yellow margin.



**Secret Armina** *Armina occulta* WP, 80 mm. ID: oral veil with curved blue lines, foot with a blue marginal band, oral veil and mantle with orange.



**Scott's Armina** *Armina scotti* WP, 60 mm. ID: foot and oral veil with yellow (outermost) and blue marginal bands. Bluish rhinophores with orange tips.



**Pink-Face Armina** *Armina variolosa* Japan, China, Philippines, 50 mm. ID: pink mantle and oral veil.



**Orange-Margined Armina** *Armina* sp. WP, 105 mm. ID: mantle, foot and oral veil with orange margin.



**Bluish-Foot Armina** *Armina* sp. WP, 50 mm. ID: head and foot with blue pigment, velum with orange margin.



**Orange-Chin Armina** *Armina* sp. Philippines, 40 mm. ID: pale-orange velum w/orange margin, foot white.





**Maroon Doto** *Doto* sp. Philippines, Indonesia, 20 mm. ID: red-brown or maroon, rhinophores sheath margins yellow with bright yellow dots. Tubercles with yellow apex spot.



**Red Doto** *Doto* sp. Indonesia, Hong Kong, Japan, 7 mm. ID: red-orange with opaque white areas on sides, rhinophores sheath with papillae on margin.



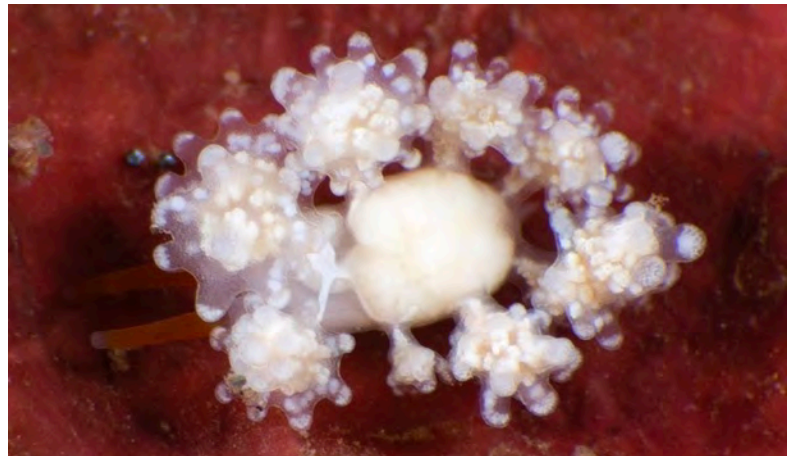
**Brown Doto** *Doto* sp. PNG, 12 mm. ID: dark-brown body and translucent cerata covered by white dots.



**Grape Doto** *Doto ussi* IWP, 30 mm. ID: yellowish-grey with opaque white pigment.



**Orange-Horned Doto** *Doto* sp. Indonesia, 5 mm. ID: white with orange rhinophores. Translucent cerata, each rounded tubercle with opaque white apex.



**Black-Striped Doto** *Doto* sp. Indonesia, 8 mm. ID: cream-yellow, finger-like tubercles with black stripes.



**Black-Spotted Doto** *Doto* sp. Indonesia, 11 mm. ID: black-tipped tubercles, apex tubercles yellow.





**Black-Ring Eubbranchus** *Eubbranchus* sp. WCP, 8 mm. Rhinophores and oral tentacles with black rings.



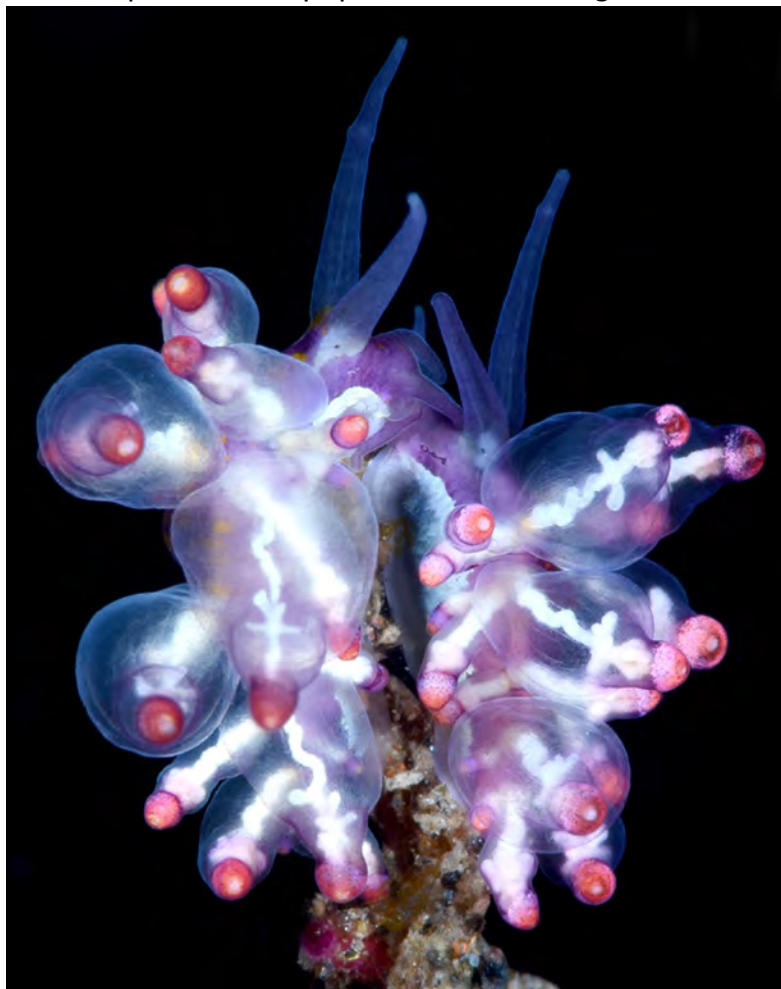
**Red-Ring Eubbranchus** *Eubbranchus* sp. WP, 9 mm. ID: white-spotted, each rhinophores with a red ring.



**White Eubbranchus** *Eubbranchus* sp. Indonesia, 8 mm. ID: rhinophores with papillae and dark ring.



**Red-Dots Eubbranchus** *Eubbranchus* sp. Indonesia, 10 mm. ID: rhinophores with reddish ring.



**Purple Eubbranchus** *Eubbranchus* sp. Indonesia, 7 mm. ID: purple body with orange spots, inflated cerata with white digestive glands visible, purple head.



**Yellow Zigzag Eubbranchus** *Eubbranchus virginalis* WP, 40 mm. ID: translucent with black dots.



**Red-Tipped Eubbranchus** *Eubbranchus* sp. Indonesia, 16 mm. ID: translucent, red-tipped cerata with white digestive glands visible.







**White Tenellia** *Tenellia puti* Philippines, Indonesia, Thailand, Tanzania, Red Sea, 25 mm. Basal 2/3 of the cerata white, followed by well defined (unlike *T. bughaw*) blue subapical band. Apical band yellow.



**Siboga Tenellia** *Tenellia sibogae* IP, 35 mm. **ID:** variable coloration, notum purple to red, cerata with yellowish tips and white apex. Feeds on hydroids.



**Yamasui's Tenellia** *Tenellia yamasui* Indonesia, Philippines, Japan, 15 mm. **ID:** orange head with white marking, brownish or greenish cerata with opaque white dots.



**Pink-Top Tenellia** *Tenellia* sp. Indonesia, 20 mm. **ID:** grey cerata with pink apex. **Photo:** Jack Israel.



**White-Band Tenellia** *Tenellia* sp. Indonesia, 20 mm. **ID:** cerata with white apex, blue and yellow rings.





**Iriomote Phyllodesmium** *Phyllodesmium iriomotense* WP, 100 mm. Translucent white, curved cerata with visible pinkish-yellow digestive glands, feeds on octocorals.



**Glassy Phyllodesmium** *Phyllodesmium hyalinum* IWP, 45 mm. **ID:** translucent body with opaque white frosting, cerata apically nodulose and curved, with white or brownish digestive glands. Head with pinkish spots.



**Cryptic Phyllodesmium** *Phyllodesmium crypticum* IWP, 50 mm. Extremely cryptic species, feeds on soft-coral *Xenia* sp. **ID:** translucent white, nodulose cerata with “dentate” appearance on the edges.





**White-Spotted Phyllodesmium** *Phyllodesmium* sp. WP, 12 mm. **ID:** bluish with white patches.



**Golden Phyllodesmium** *Phyllodesmium* sp. Philippines, 14 mm. Golden dots, cerata bluish apically.



**Poindimie's Phyllodesmium** *Phyllodesmium poindimiei* IP, 40 mm. **ID:** Translucent white or bluish, notum and cerata often with white spots. Cerata smooth, curved, with yellowish branching digestive glands.



**Karen's Phyllodesmium** *Phyllodesmium karenae* WP, 20 mm. Purplish cerata with white apices.



**Orange Phyllodesmium** *Phyllodesmium* sp. WP, 25 mm. **ID:** wide yellow foot. **Photo:** Bjarte Håkonsen.



**Undulate Phyllodesmium** *Phyllodesmium undulatum* WP, 40 mm. **ID:** white median line.





**Scarlet Pupa** *Pupa coccinata* IWP, 20 mm. ID: white, shell with spiral pattern of orange spots.



**Shining Pupa** *Pupa nitidula* IWP, 15 mm. Feeds on polychaetes. ID: white, shell white to orange.



**Solid Pupa** *Pupa solidula* IWP, 20 mm. ID: white, shell with spiral pattern of black spots.



**Red-Lined Bullina** *Bullina* sp. WP, 15 mm. ID: white, shell with fine red lines.



**Brown-Lined Paperbubble** *Hydatina physis* Circum-tropical, 60 mm. Red with bluish edges, striated shell.



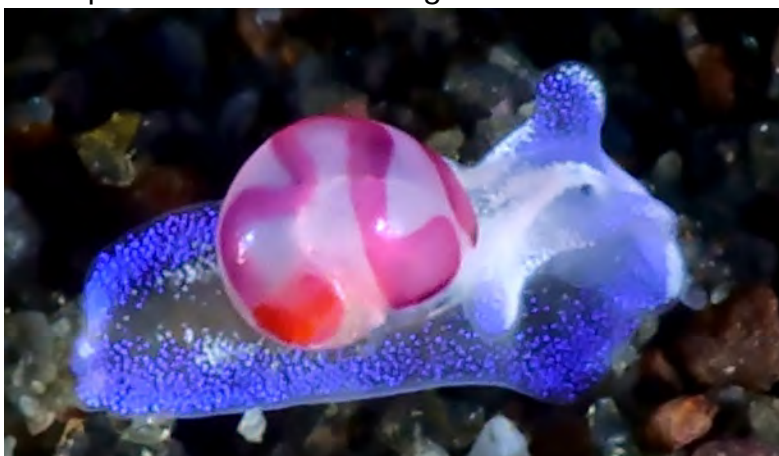
**White-Lined Paperbubble** *Hydatina zonata* IP, 50 mm. Shell with white spiral bands. **Photo:** Jun V Lao



**Swollen Bubble Snail** *Aplustrum amplustre* IP, 30 mm. Pink spiral bands w/black margins. **Photo:** Jerome Kim



**Barbara's Melo** *Micromelo barbarae* WCP, 30 mm. ID: yellow-orange and green marginal bands.



**Guam Melo** *Micromelo guamensis* WP, 30 mm. Large densely arranged white patches, pale blue and dark blue marginal bands. Right - adult. Photo on the left - tiny juvenile, 2-3 mm (**Photo:** Ni Komang Suci)



DIAPHANIDAE



**Fried-Eggs Slug** *Colpodaspis thompsoni* IP, 3 mm. ID: dark-brown with yellow warts on white patches.

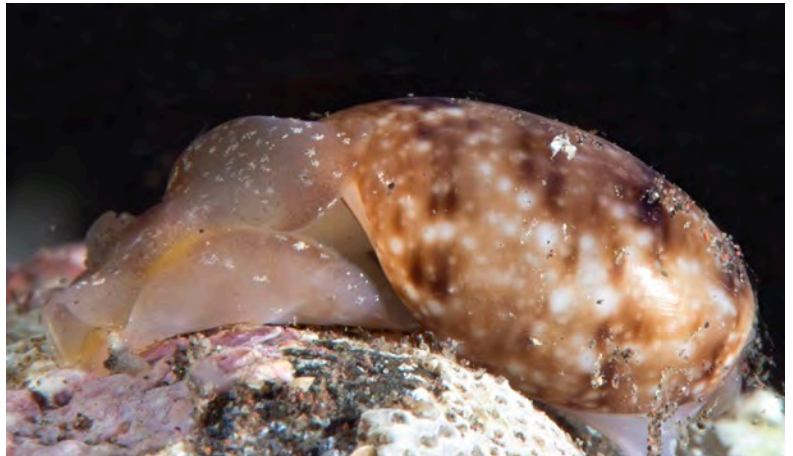


**White-Dotted Colpodaspis** *Colpodaspis* sp. WP, 5 mm. ID: visceral hump with small white spots.

CEPHALASPIDEA - BULLIDAE



**Bottle Bulla** *Bulla ampulla* IWP, 20 mm. ID: orange with white spots, unrolled cephalic tentacles.



**Oriental Bulla** *Bulla orientalis* IWP, 20 mm. ID: brown, shell with spiral bands or scattered with dark dots.



**Shining Bulla** *Bulla vernicosa* WCP, 30 mm. ID: body light brown to reddish with patches of bright white dots, shell small, thick, reddish brown.



MNESTIIDAE



**Pale Mnestia** *Mnestia* cf. *girardi* Mnestiidae, Indonesia, 9 mm. ID: bulla-like shell with atys-like striation.



**Yellow-Spotted Ilbia** *Ilbia mariana* Runcinidae, WP, 3 mm. ID: white with yellow patches.

HAMINOEIDAE



**Cylindrical Bubble** *Aliculastrum cylindricum* IP, 30 mm. Greenish, shell with striations at both ends.



**Debile's Bubble** *Aliculastrum debile* WCP, 20 mm. Body with white pigment, shell w/striations at the ends.

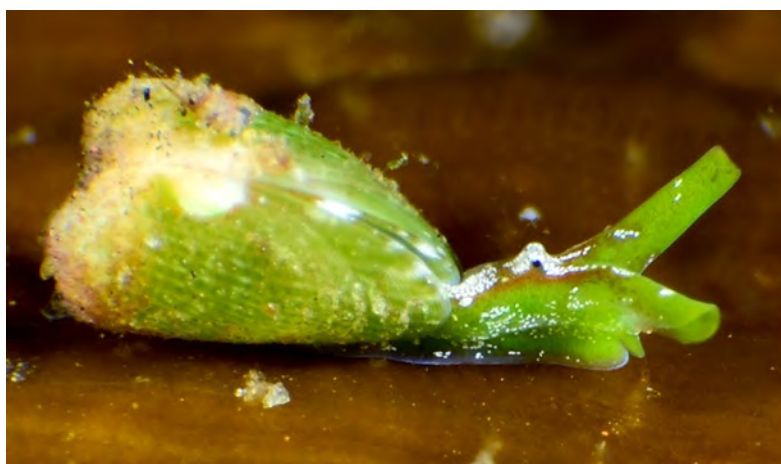
DIAPHANIDAE

CEPHALASPIDEA - BULLIDAE

RUNCINIDAE

HAMINOEIDAE





**Zebra Julia** *Julia zebra* IP, 5 mm. Bivalve gastropods, their shell consists of two separate pieces. Feeds on green alga *Caulerpa*. **ID:** body with white and reddish spots, shell with bands.



**White Volvatella** *Volvatella* sp. WP, 8 mm. **ID:** shell white with scattered orange spots.



**Orange Volvatella** *Volvatella vigourouxii* WCP, 25 mm. Emits a white mucus when disturbed (on photo).



**Inflated Volvatella** *Volvatella ventricosa* WCP, 15 mm. Found on green alga *Caulerpa racemosa*. **ID:** white with green inflated shell. **Photo:** A. Maximov.



**White-Spotted Lobiger** *Lobiger* sp. IP, 15 mm. On *Caulerpa* green alga. Green shell without blue lines.



**Green Lobiger** *Lobiger viridis* IP, 20 mm. Feeds on green alga *Caulerpa*. **ID:** thin blue lines on the shell.



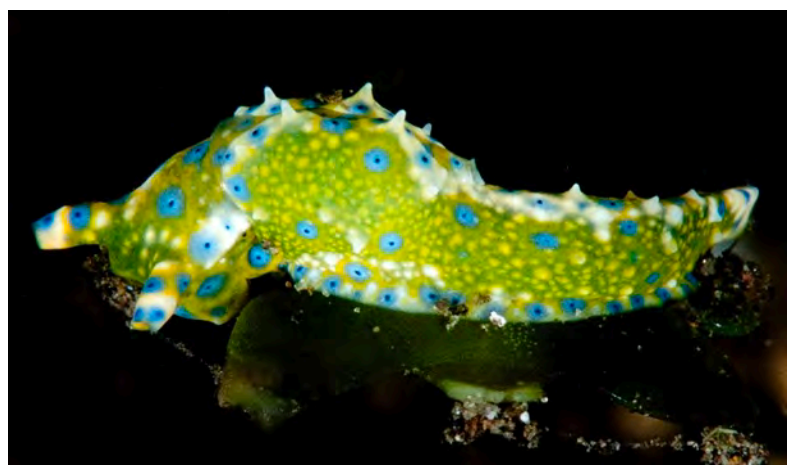
**Tessellate Oxynoe** *Oxynoe kylei* WCP, 15 mm. Feeds on *Caulerpa filicoides* green alga. **ID:** cream with reticulate brown pattern and blue spots, large papillae.







**Pale Oxynoe** *Oxynoe jordani* WP, 22 mm. White pigment on body and tail, blue spots with black centres.



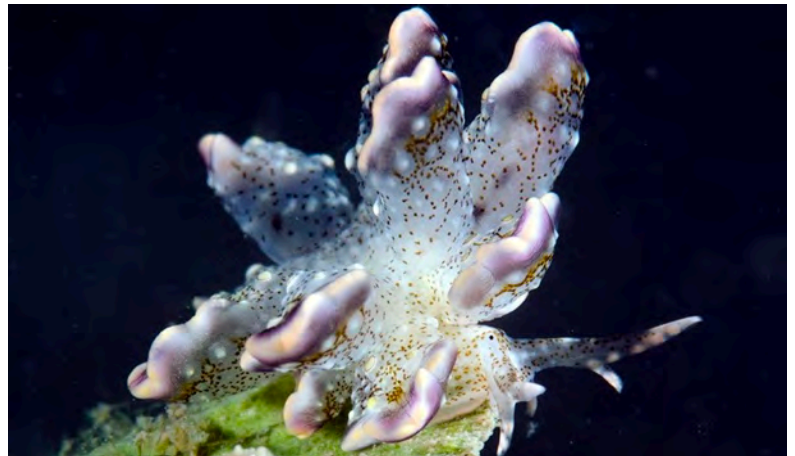
**Dark-Dot Oxynoe** *Oxynoe* sp. WP, 20 mm. ID: blue spots with black centres. IT, probably *O. jordani*.



**Green Oxynoe** *Oxynoe viridis* IP, 20 mm. Found in small groups on green alga *Caulerpa racemosa*. ID: green with yellow patches, blue spots ringed in yellow.



**Bourbon Butterfly Slug** *Cyerce bourbonica* IP, 20 mm. ID: Inflated cerata with pale purple outline, translucent white with grey pigment and brown



**Yellow Butterfly Slug** *Cyerce trowbridgeae* WP, 30 mm. White with grey pigment, cerata with brown dots.



**Peacock Butterfly Slug** *Cyerce pavonina* IP, 30 mm. ID: brownish cerata with transparent pustules.



**Whaap's Butterfly Slug** *Cyerce whaapi* IP, 50 mm. ID: translucent cerata with white bands and edges.



**Elegant Butterfly Slug** *Cyerce elegns* WP, 60 mm. ID: lavender cerata with neon-blue spots.





**White-Edged Butterfly Slug** *Cyerce goodheartae* WP, 25 mm. Translucent cerata with white outlines.



**Kikutaro's Butterfly Slug** *Cyerce kikutarobabai* WP, 15 mm. ID: cerata with orange apex line.



**Dark Butterfly Slug** *Cyerce nigra* WP, 15 mm. ID: yellow-orange with black lines and opaque white pigment. Cerata with concentric yellow lines and yellow spots.



**Black And Gold Butterfly Slug** *Cyerce nigricans* IWP, 40 mm. On filamentous alga. **Photo:** Jerome Kim.



**Dark-Net Butterfly Slug** *Cyerce katiae* Philippines, 18 mm. ID: network of dark lines, white and yellow spots.



**Dark-Dotted Mourgona** *Mourgona* sp. WP, 20 mm. ID: cerata and rhinophores with black dots.



**White-Edge Mourgona** *Mourgona* sp. Philippines. On bubble alga, 20 mm. Cerata with digestive glands.



**Grainy Mourgona** *Mourgona* sp. Indonesia, Philippines. On bubble alga, 15 mm. ID: small brown-pigment area near eyes. Cerata with digestive glands and scalloped opaque white margins. Photo on the left: juvenile.







**Black-Dotted Polybranchia** *Polybranchia jannae* WP, 20 mm. Papillated cerata with black dots and red lines. Photo on the left: juvenile.



**Oriental Polybranchia** *Polybranchia orientalis* IP, 70 mm. ID: greenish to pink, brown dots, visible glands.



**Green-Gland Polybranchia** *Polybranchia* sp. Indonesia, 10 mm. ID: cerata with visible greenish glands.



**Black-Edge Polybranchia** *Polybranchia* sp. WP, 18 mm. Yellow digestive glands, cerata edge with black lines.



**Palau Soghenia** *Sohgenia palauensis* IWP, 15 mm. ID: cerata with red dots and opaque white areas.



**White-Dotted Costasiella** *Costasiella formicaria* IWP, 15 mm. Feeds on cyanobacteria.



**Yellow Costasiella** *Costasiella* sp. Indonesia, 12 mm. ID: yellow cerata, each with black central line.

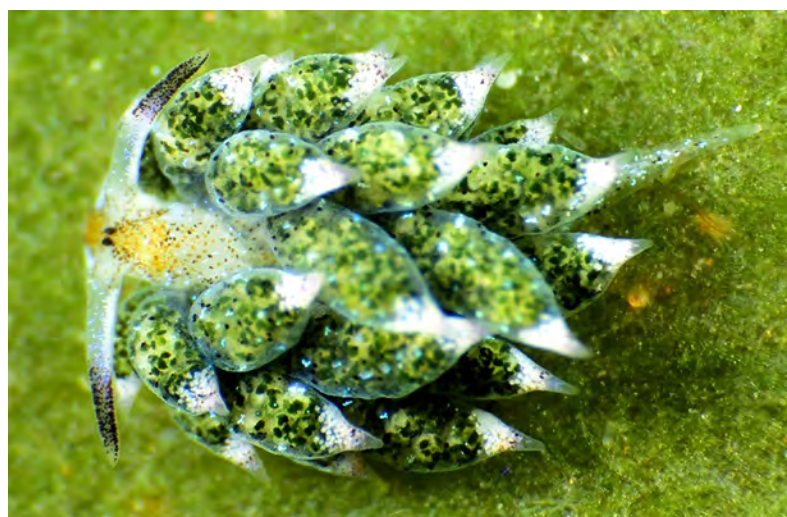


**Black-Loop Costasiella** *Costasiella fridae* IWP, 12 mm. ID: black oval behind the rhinophores.



**Rabbit Costasiella** *Costasiella usagi* WP, 10 mm. ID: black rhinophores, white-striped cerata.





**Leaf Sheep** *Costasiella kuroshimae* IWP, 7 mm. Found on *Avrainvillea* sp. green alga, like other costasiella. Variable coloration. **ID:** sandglass-shaped brownish patch behind the eyes, dark-tipped rhinophores.



**Purple-Tipped Costasiella** *Costasiella* sp. Indonesia, PNG, 12 mm. Translucent white, rhinophores grey-bluish. Cerata with purple tips.





**White-Cap Costasiella** *Costasiella* sp. Indonesia, 5 mm. **ID:** white patch behind the rhinophores, green cerata with blue spots and white apices.



**Deceptive Costasiella** *Costasiella* sp. Indonesia, Philippines, 10 mm. Found on *Avrainvillea* sp. green alga. **ID:** closely set eyes, dark blue rhinophores with yellow stripe.



**White-Dotted Ercolania** *Ercolania annelyleorum* WP, 5 mm. Body and cerata with digestive glands.



**White Ercolania** *Ercolania* sp. Indonesia, 3 mm. Translucent w/reddish digestive glands and white spots.



**Bubble-Alga Ercolania** *Ercolania endophytophaga* Australia, Philippines, 13 mm. Lives inside the large cells of the green alga *Struvea plumosa* and *Valonia ventricosa*. Cerata and rhinophores with green digestive glands.







**White-Patch Ercolania** *Ercolania* sp. Philippines, 9 mm. Lives within giant bubble-shaped cells *Boergesenia*. ID: white with green digestive glands in the head, cerata and rhinophores.



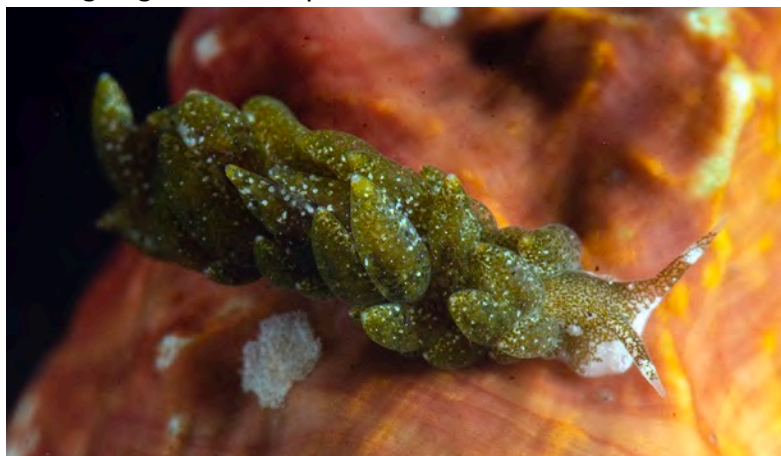
**Yellow-Tipped Ercolania** *Ercolania* sp. WP, 8 mm. ID: cerata with opaque white spots and yellow tips.



**Green Ercolania** *Ercolania kencolesi* WCP, 6 mm. ID: Light green, rhinophores with white bands.



**Golden Ercolania** *Ercolania* sp. Philippines, 10 mm. ID: digestive gland pigment on the head unbranched.



**Tattooed Ercolania** *Ercolania* sp. Philippines, 10 mm. Internal feeder, like other animals on this page, feeds inside giant alga cells. ID: digestive gland pigment on the head and body highly branched.



**Fuzzy Ercolania** *Ercolania* sp. Philippines, 8 mm. ID: digestive gland pigment with distinct pattern.



**DID YOU KNOW?** Internal feeders are not only living and feeding inside alga cells but also laying eggs!





**Mushroom Slug** *Sacoproteus nishae* WCP, 30 mm. ID: mushroom-shaped cerata. Photo: Bjarte Håkonsen.



**Emerald Slug** *Sacoproteus smaragdinus* IP, 50 mm. ID: bubble-like cerata, found on *Caulerpa racemosa*.



**Ornate Stiliger** *Stiliger ornatus* IWP, 10 mm. Feeds on alga *Codium* sp. ID: orange, cerata each with dark sub-apical band and orange apex. There are black patches on the head between and under the rhinophores.



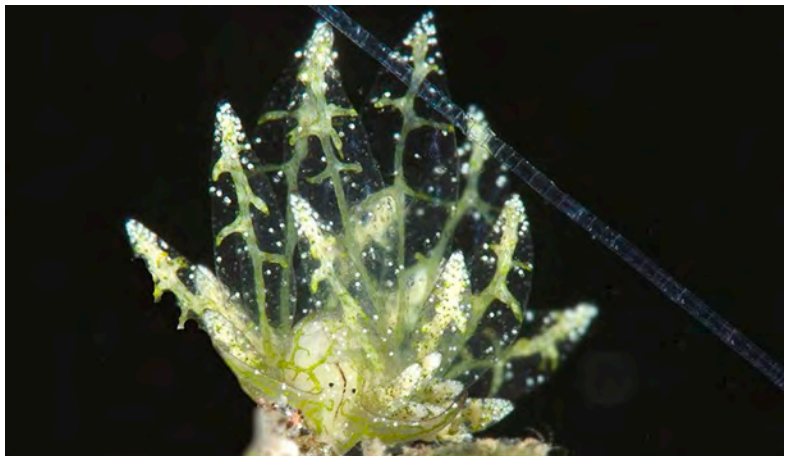
**Yellow-Chin Stiliger** *Stiliger* sp. Philippines, Taiwan 10 mm. On *Codium* sp. Head with blue patches.



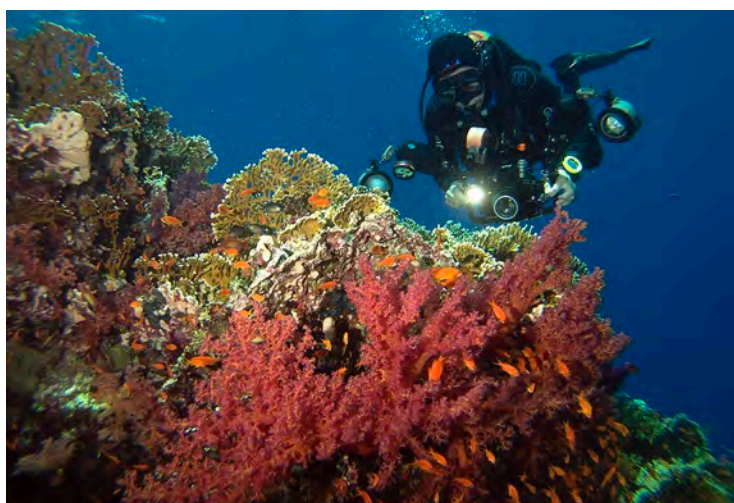
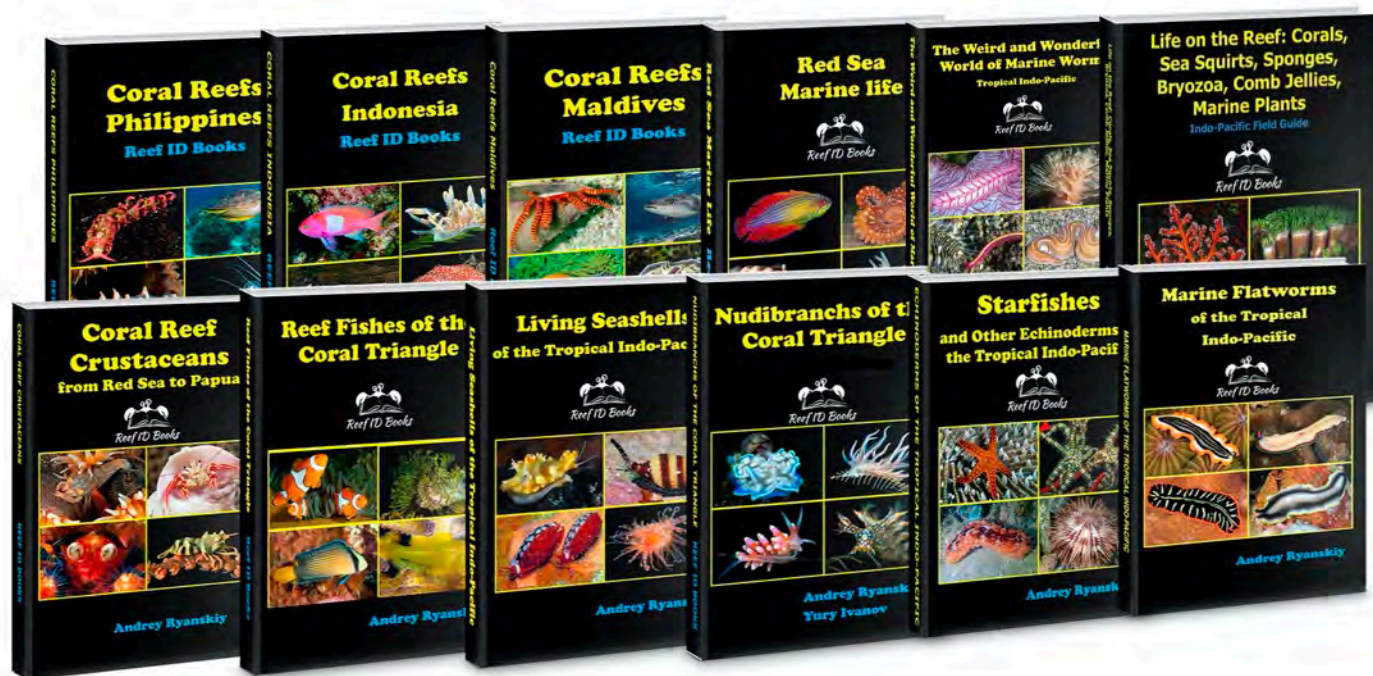
**Pale Stiliger** *Stiliger* sp. WP, 6 mm. ID: cerata, head and rhinophores with opaque white spots.



**Median-Line Stiliger** *Stiliger* sp. WCP, 8 mm. ID: translucent with thin brown digestive gland on the head, cerata each with greenish digestive glands and opaque white spots.







Want the full guide Nudibranchs of the Coral Triangle?

[eBook version](#) - multi-platform PDF

[Amazon](#) - paperback and hardcover

[Apple](#) eBooks version